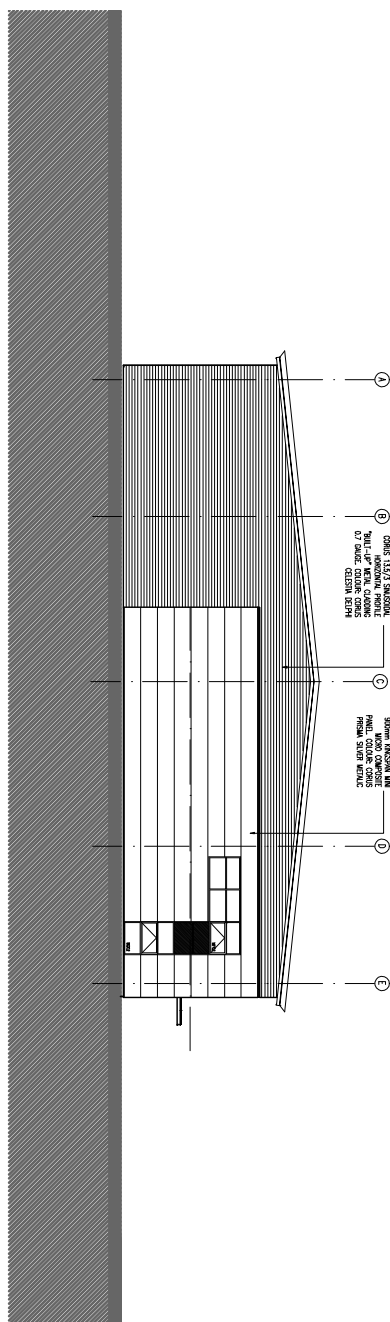
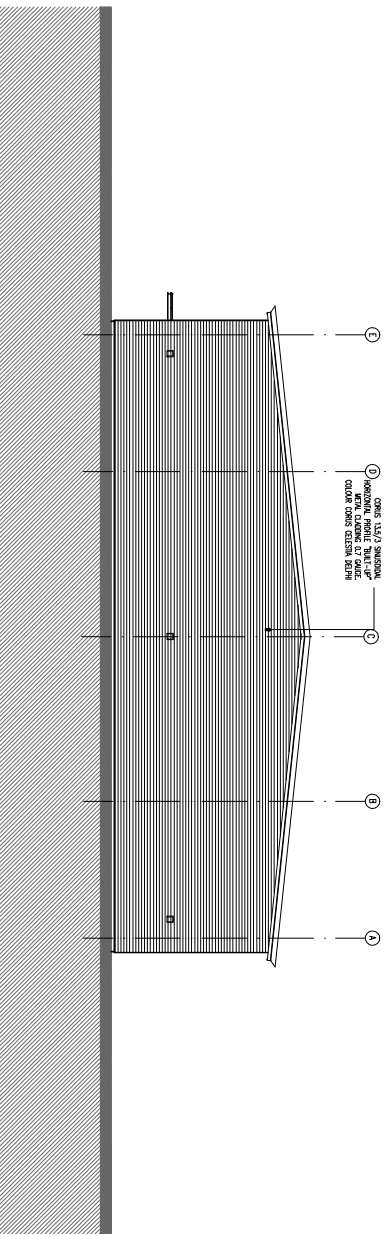


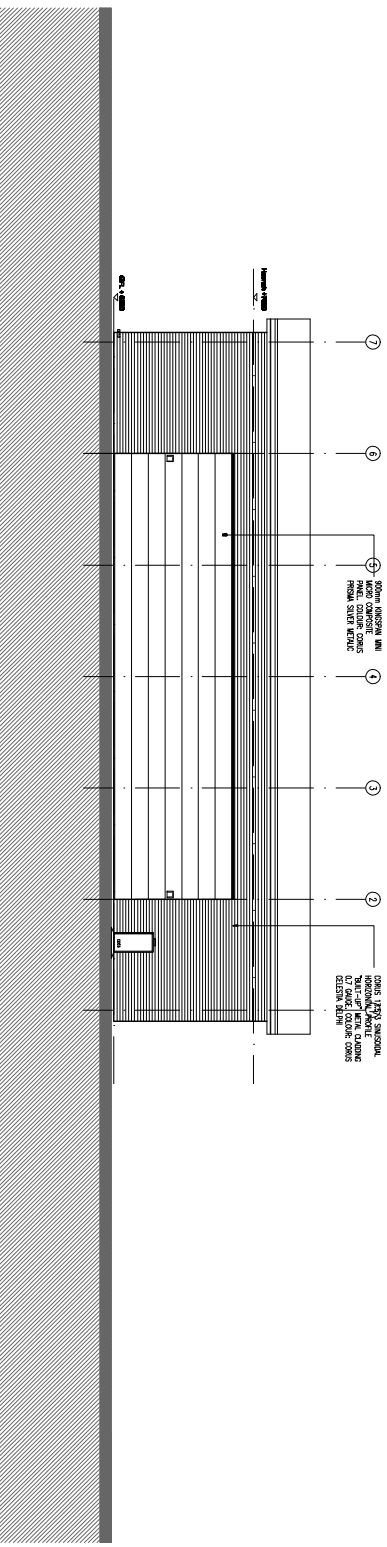
**WEST ELEVATION**  
(ALONG GL B)



**NORTH ELEVATION**  
(ALONG GL I)



**SOUTH ELEVATION**  
(ALONG GL J)



**EAST ELEVATION**  
(ALONG GL A)

**SOUTHERN COMMERCIAL**  
 UNIT F - PROPOSED GA PLAN 1:200

**UNIT F - ELEVATION**  
**SOUTHERN COMMERCIAL**

**AS BUILT ISSUE**

SCALE 1:200 @ A1

REV / DATE | SCALE 0/1

**FletcherArchitects**  
 Designers & Master Planners

UNITS 1 & 2 RIVERSIDE LODGE  
 COMMERCIAL STREET  
 MANCHESTER M15 4RQ  
 T +44(0)161 888 1390  
 F +44(0)161 888 1391  
 info@fletcherarchitects-uk.com  
 www.fletcherarchitects-uk.com

PROPOSED COMMERCIAL DEVELOPMENT  
 for HELIOS (INDUSTRIAL DEVELOPMENTS) LTD

UNIT F - ELEVATIONS

|                     |          |            |          |
|---------------------|----------|------------|----------|
| STATUS              | AS BUILT | DATE       | 30.05.07 |
| DRAWN BY            | RCI      | CHECKED BY | 1:200GA1 |
| <b>1221 - AB141</b> |          |            |          |